



**£1,750 PCM**  
**Epsom Close**  
Stevenage, SG1 5TE



PROPERTY SUMMARY

Welcome to this charming semi-detached house located on Epsom Close in the sought-after area of Stevenage. This property boasts two reception rooms, perfect for entertaining guests or simply relaxing with your family. With three cosy bedrooms and two bathrooms, there is ample space for everyone to enjoy.

The well-presented interior of this house is sure to impress, offering a comfortable and inviting atmosphere throughout. The main bedroom features an ensuite bathroom, providing a touch of luxury and convenience.

Situated in the catchment area of Martinswood School, this home is ideal for families with children looking for quality education nearby. Additionally, the property offers parking space for two vehicles, ensuring you never have to worry about finding a spot for your car.

Located in the Martinswood/Pavillion Fields area, you'll enjoy the tranquillity of this neighbourhood while still being close to all the amenities Stevenage has to offer. Don't miss out on the opportunity to make this lovely house your new home.

3



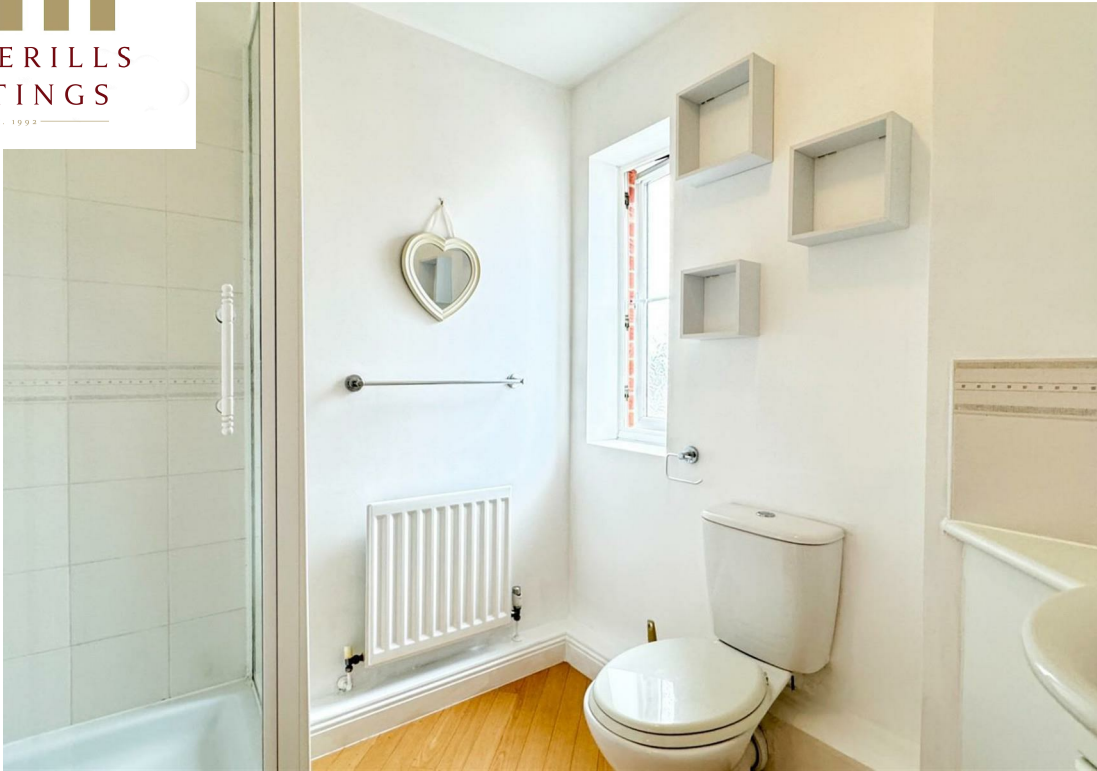
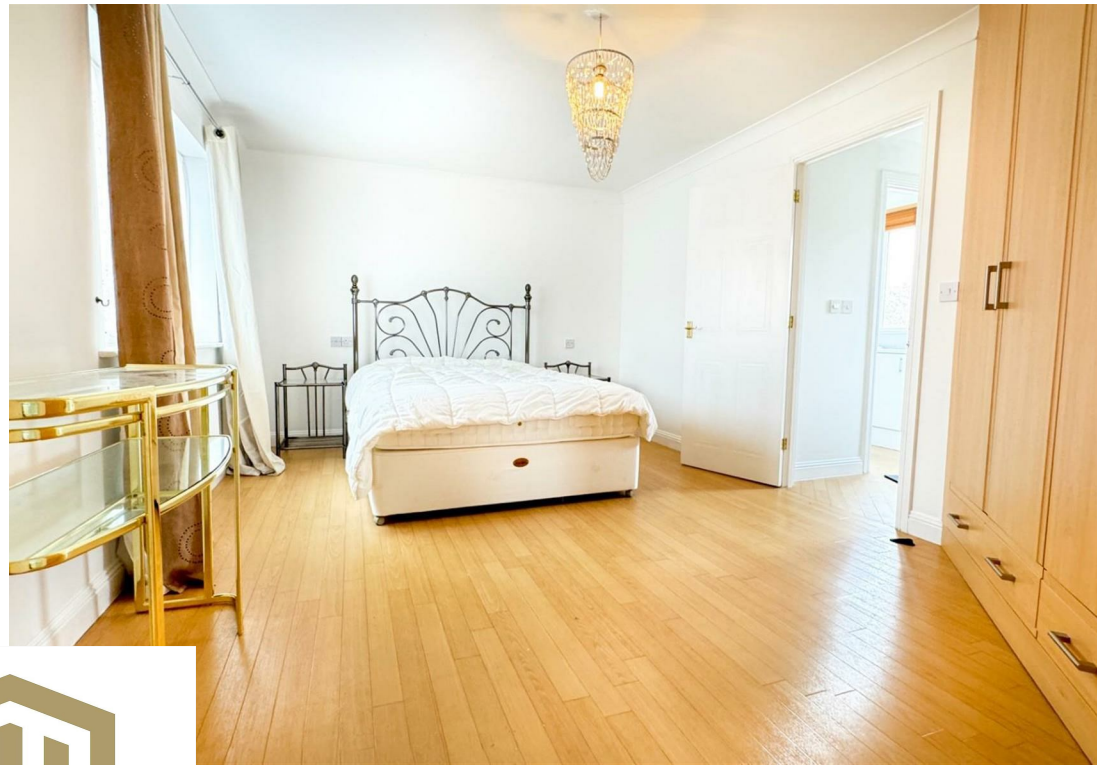
2



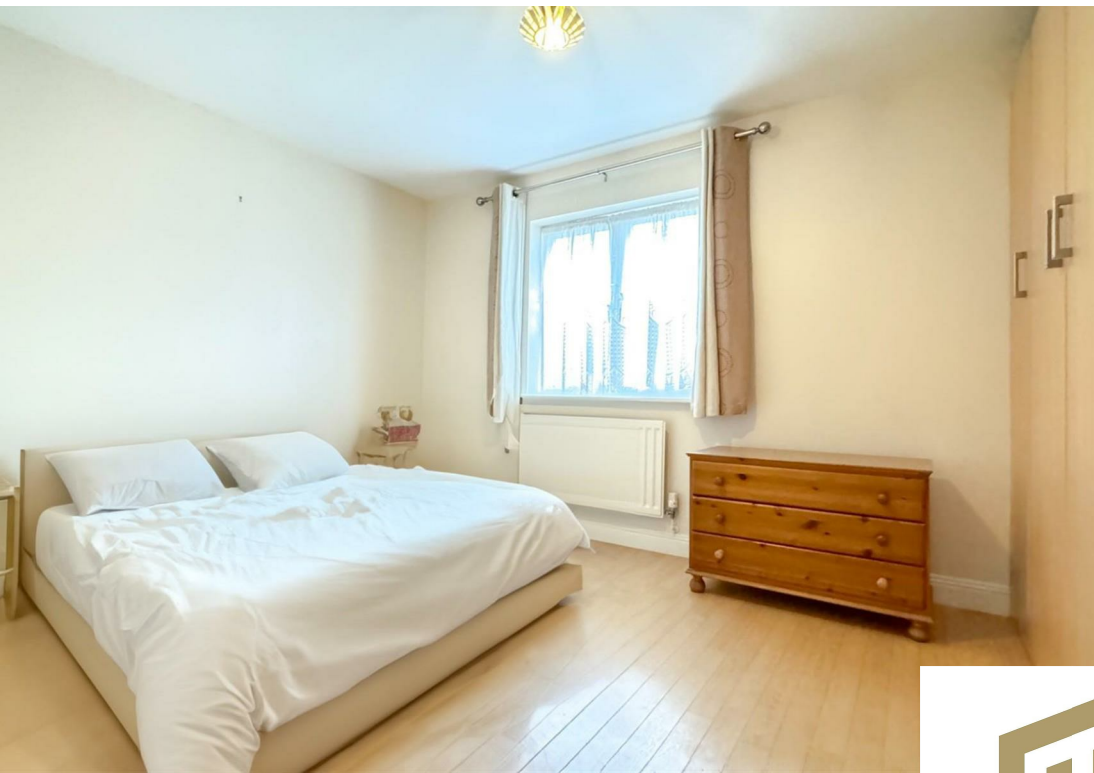
2















## LOCAL AUTHORITY

Stevenage

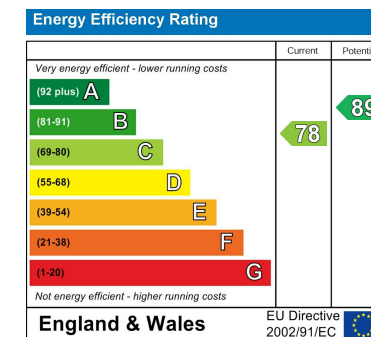
## TENURE

## COUNCIL TAX BAND

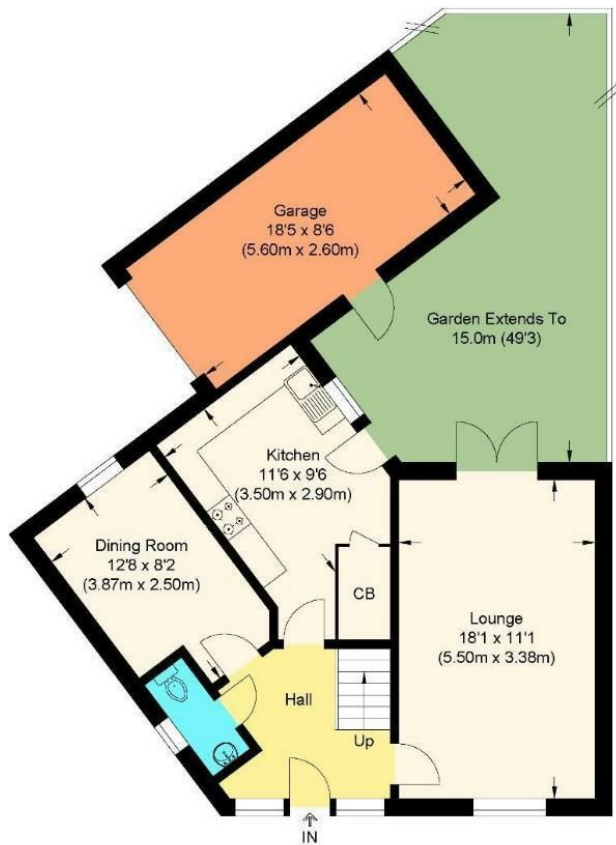
E

## VIEWINGS

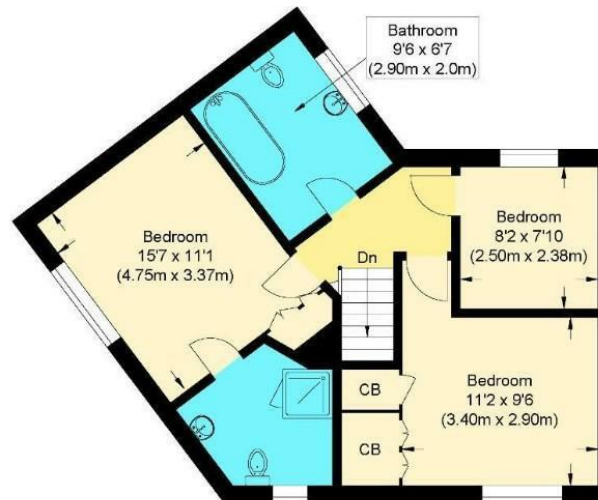
By prior appointment only



Agents Note: Whilst every care has been taken to prepare these particulars, they are for guidance purposes only. All measurements are approximate and are for general guidance purposes only and whilst every care has been taken to ensure their accuracy, they should not be relied upon and potential buyers/tenants are advised to recheck the measurements



Ground Floor



First Floor

## Epsom Close, Stevenage

Approximate Gross Internal Floor Area : 101.40 sq m / 1091.46 sq ft

Garage : 14.60 sq m / 157.15 sq ft

Illustration for identification purposes only, measurements are approximate, not to scale.



### OFFICE ADDRESS

Putterills Lettings  
123 London Road  
Knebworth  
SG3 6EX

### OFFICE DETAILS

01462 419333  
lettings@putterills.co.uk  
www.putterills.co.uk